

Silverprint – news & views



Rollei - Boxing Clever

It is not often a new film comes along, so having half a dozen sprung on the market is quite an event. Rollei, the famed German manufacturer have teamed up with MACO, the Hamburg based photo material distributor to bring in a range of films under the ROLLEI banner.

Included are the RETRO pair of films rated at 100 and 400 ISO respectively, while those looking for ultra fine grain have the PAN 25. The R3 variable speed film was launched last year. The Rollei Infrared range also includes roll film, now the only infra-red film in this format. Completing the lineup is ORTHO 25, now the only generally available high contrast document film in 35mm cassettes.

PRICES including VAT

ORTHO 25 135-36 x 10	£70.91
INFRARED 135-36 x 10	£62.94
RETRO 100 & 400 135-36 x 10	£24.25
PAN 25 135-36 x 10	£35.66
R3 135-36 x 10	£43.64

All 10's include **FREE POSTAGE** and the special beechwood **ROLLEI BOX** during January '06.

Where after Technical Pan?

Coupled with Technidol developer, Kodak Technical Pan was capable of delivering 5x4" sheet film quality from the 35mm frame. The film and developer are no more, but maybe ORTHO 25 can supply the niche.

Document films achieve extremely fine grain and sharpness mainly due to two factors, firstly the emulsions are extremely thin compared to conventional films, but most importantly the individual silver grains are small and formed in a narrow size distribution. Hence high sharpness but

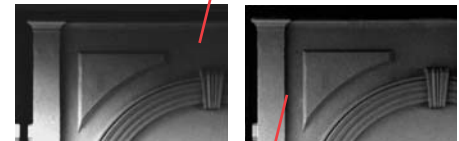


high contrast, and the need to use special low contrast development to control this. The MACO low contrast developer is 'Docufine' supplied like the old Technidol as a liquid concentrate in glass. Recommended dilution is 1+4, and

development times are slightly different for both films, 7 minutes for ORTHO 25, 9 minutes for Technical Pan. Comparative shots of a scene with wide luminance values using both films gave negs. shown scanned 'as is' below.



Technical Pan (top) is yielding maybe about 40 ISO relative to 25 ISO from the MACO film. Both films are on polyester base, and although there is considerable difference in base density and colour, they are in the same ball park for contrast and tone, although bear in mind that ORTHO 25 is, by it's nature, orthochromatic.



top: Technical Pan bottom: ORTHO 25

....the final analysis

Prints were made to 20x30" from both negatives. It is unlikely this will be visible in the above blowups, but our conclusion from this quick test is that although Technical Pan has the edge over ORTHO 25 in terms of fineness of grain, ORTHO 25 scores well above it in sharpness. There is transparency of fine detail, especially in the more subtle detail of the mouldings, while Technical Pan although probably technically finer grained is losing information in an overall 'mushiness'. Having said that, to produce fine grain 20x30" prints from 35mm is amazing - both films are exceptional, except ORTHO 25 is available - and Technical Pan isn't!

WWW.SILVERPRINT.CO.UK

Full details of everything we offer, now standing at about 500 web-pages, not to mention



downloadable PDF's etc. Mail-order from the site, or visit us in Waterloo.

Silverprint Ltd
 12 Valentine Place, London
 SE1 8QH
 tel 020 7620 0844 fax 020 7620 0129
www.silverprint.co.uk